


nemo's
garden

Scenario

The United Nations' Food and Agriculture Organisation (FAO) estimates that in the next 20 to 30 years the world will need 50% more food, 45% more energy and 30% more water to sustain a projected global population of nine billion or more.

Scenario

In the era of pollution, desertification, urban expansion, population growth and constant reduction of arable land, underwater agriculture represents our commitment to seek alternative resources on a planet made up of 70% water.

A diver in a blue wetsuit and purple fins swims horizontally in the upper left quadrant of the frame. The background is a deep blue, slightly hazy underwater environment. In the center and foreground, several large, spherical, metallic-looking structures are mounted on a dark metal frame. Each sphere is illuminated from within, casting a bright, circular glow. The structures are arranged in a line, receding into the distance. The overall scene is a futuristic underwater farm.

This is Nemo's Garden.
The first ever underwater farm.

Our Vision

Nemo's Garden has a value that we deeply feel as a solution for future generations, for oceans life and for those countries where climate conditions make cultivating impossible.



Location

The Pilot Plan is on the Italian Riviera, not far from Genoa, 80 m off the shoreline, in the sheltered waters of Noli Bay.

Structure

Nemo's Garden works as an hydroponic-based, self-sustainable system that is composed of 6/9 methacrylate domes. The biospheres are anchored to the bottom of the sea by chains and screws.

The system

Inside the biosphere water condenses on the inner walls, dripping back down to keep the plan watered, while the warm and constant sea temperature between day and night creates ideal growing conditions.





Scientific evidence

Underwater the atmospheric pressure is higher and the light spectrum is different. Scientific analysis show that plants grown in Nemo's Garden have higher concentration of essential oils than in conventional land culture. This means that our aromatic plants have stronger tastes.

nemo's
garden

AROMA OF THE SEA

The idea

Nemo's Garden aromatic
plans meet the finest
chocolate to create an
explosion of tastes.



Nemo's Garden Chocolates

The incredible flavors of the aromatic plants grown in Nemo's Garden are expertly extracted by master chocolatiers and kept inside a casket of the finest chocolate.

Aromatic plants

The aromatic plants are used through an infusion process in cream.

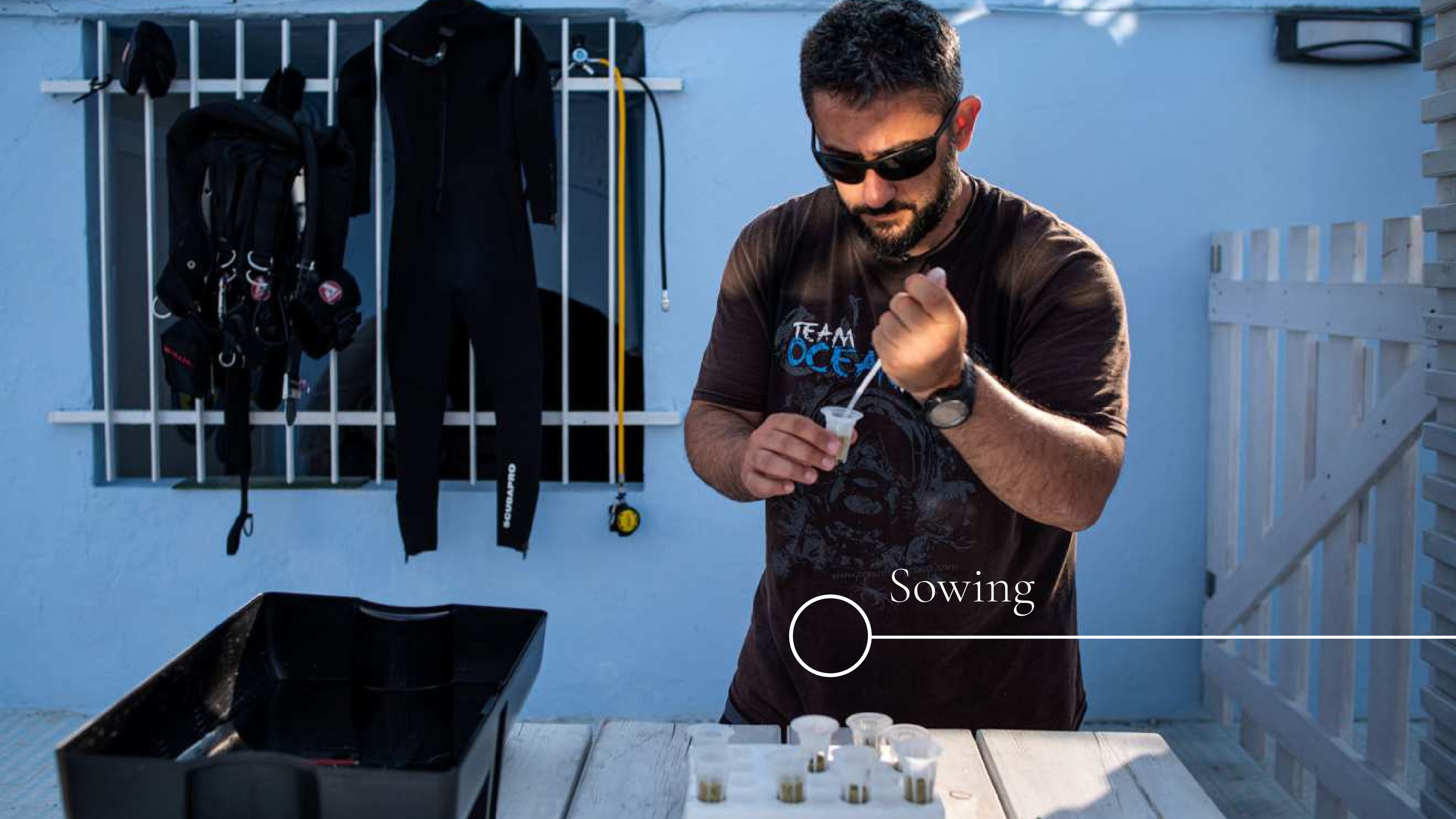


Chocolate

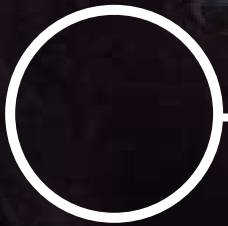
We choose chocolate extra cacao 55% to exhalt aromatic plants aroma.

The story

Nemo's Garden
aromatic plants journey:
From seed to praline

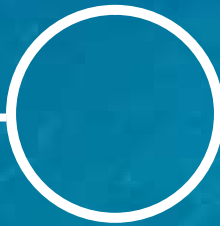


Sowing





Underwater growth



The harvest



Infusion in cream





Ganache



Chocolate waterfall

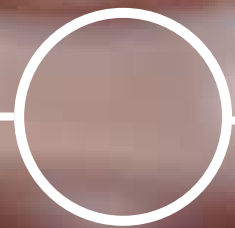


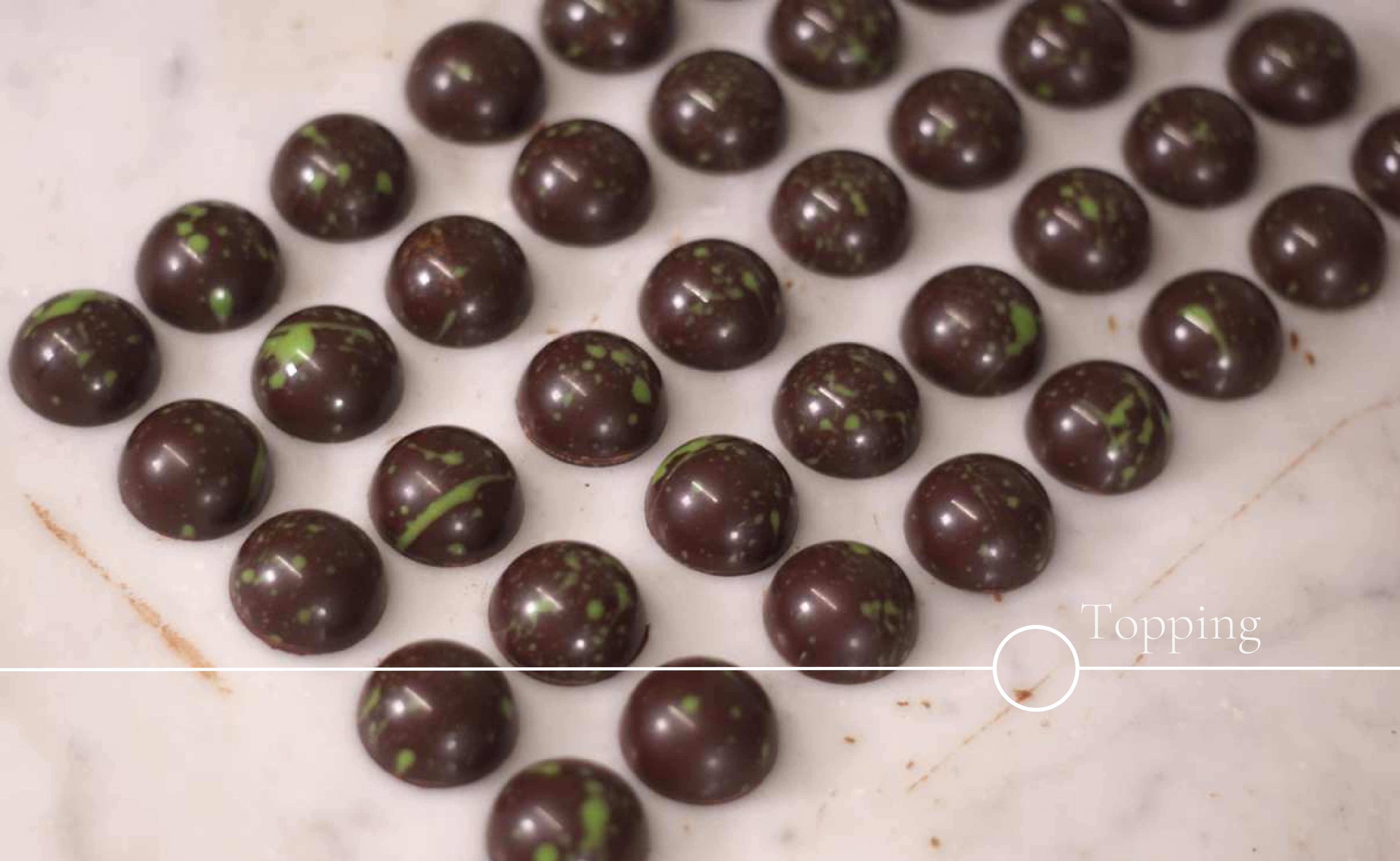


Chocolate biosphere



Filling





Topping





Packing





Tasting ○

Dive deep into flavors

Mentha lanosa
Praline



Ocimum basilicum
Praline



Melissa Officinalis
Praline



Thymus Vulgaris
Praline





"Nemo's Garden is our vision for the future of agriculture and food".